

[Factory option]

Sequin Device III Twin Type

PAT.P



Max. speed
1,000 rpm

It is now possible to embroider a max. of 4 different sizes, shapes and colors on each head !

2 kinds of sequins on one side can be interchanged and embroidered at high speeds as desired. This next-generation Sequin device permits more design options and improves production efficiency. In addition to the TFGN Series, it is now installable to the other 3 series of TLMX, TCMX and TFMX. More colorful and expressive sequin patterns are applicable on various embroidery designs.

Installable models

TFGN SERIES

TFGS SERIES

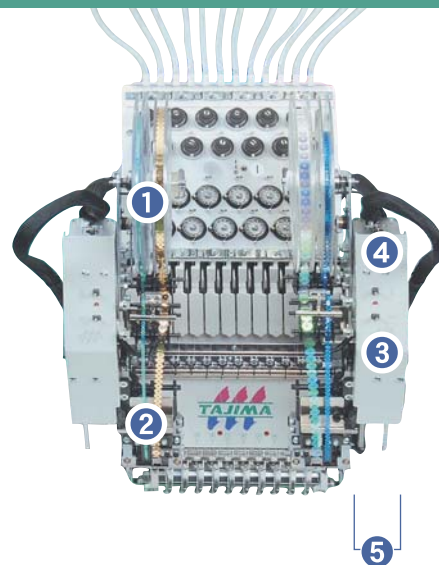
TLMX SERIES

TCMX SERIES

TFMX SERIES

TFMS SERIES

FUNCTION GUIDE



① Max. 4 types can be mounted on a single head.

2 types of sequins with differing sizes, colors, and shapes can be mounted at both the right and left sides, respectively, thereby enabling up to 4 sequin types per head. (Sequins with diameter of 3 - 9mm are embroiderable.)

② High-speed operation at max.1,000 rpm!

High-speed operation is available at a max. of 1,000 rpm. 2 kinds of sequins can be switched and stitched at high speeds as desired by sliding sequin supply unit to the right or left. (Max. 800 rpm for switching sequins)

③ Features a motor-driven lifter.

Stable up/down motion has been achieved through the adoption of a pulse motor and slide screw thus eliminating the need for pneumatic equipment. Moreover, this mechanism permits 2-step control of the lifter position and saves unnecessary up/down operation, thereby improving production efficiency.

④ Manual table-lifter switch

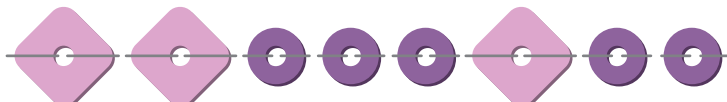
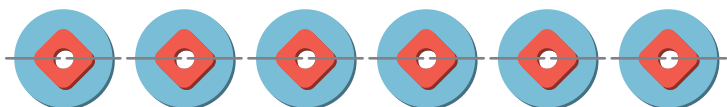
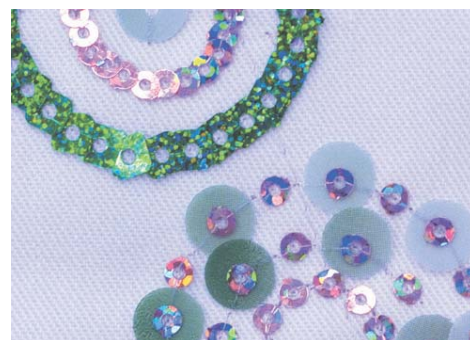
This switch is mounted to the front side of the device to move the sequin devices up/down individually, providing easy access for adjustment.

⑤ Compact in a slim body

As a result of reviewing the device structure in a slim body, Sequin Device III Twin type is now installable even to the TFGN Series 50 or 56 head models with smaller head interval.

2 sequin types translate into more versatile expressive designs.

A wide variety of stitching patterns, which used to be regarded as impossible, are now available. Designs such as a superimposing pattern or switching pattern of 2 types of sequins on one side as desired.

Basic sequin embroidery stitching patterns**1 Embroidery of 2 types of sequins in random sequence as desired****2 Embroidery of 2 types of neighboring sequins in partially overlapping fish-scale pattern****3 Superimposed embroidery of 2 types of sequins****4 Superimposed embroidery of 2 types of sequins in partially overlapping fish-scale pattern****Embroidery variations rich in design****Installable models**

TFGN Series / TFGS Series / TLMX Series / TCMX Series / TFMX Series / TFMS Series

On 6-needle machines, this sequin device can be mounted only at either the right or left side.

It is necessary to make designs in Tajima binary format (TBF).

Due to ongoing improvements, the sequin device specifications may be changed without prior notice. The operating speed may vary somewhat, depending on the operation conditions, the embroidery machine model, and the frame type.

Unauthorized use of registered trademarks and product designs which appear in this catalog is prohibited by law.

Tajima Industries Ltd.

19-22, Shirakabe 3-chome, Higashi-ku Nagoya 461-0011 JAPAN
TEL : 81-52-932-3444, 3445 FAX : 81-52-932-2457, 3449
<http://www.tajima.com>

Tokai Industrial Sewing Machine Co.,Ltd.

Head office / Main Plant
No. 1800 Ushiyama-cho, Kasugai, Aichi-pre. 486-0901 JAPAN
Technical center
1103-1 Ikeda, Muranaka, Komaki, Aichi-pre. 485-0082 JAPAN